

# Accessing Mosaic Files via SSH

---

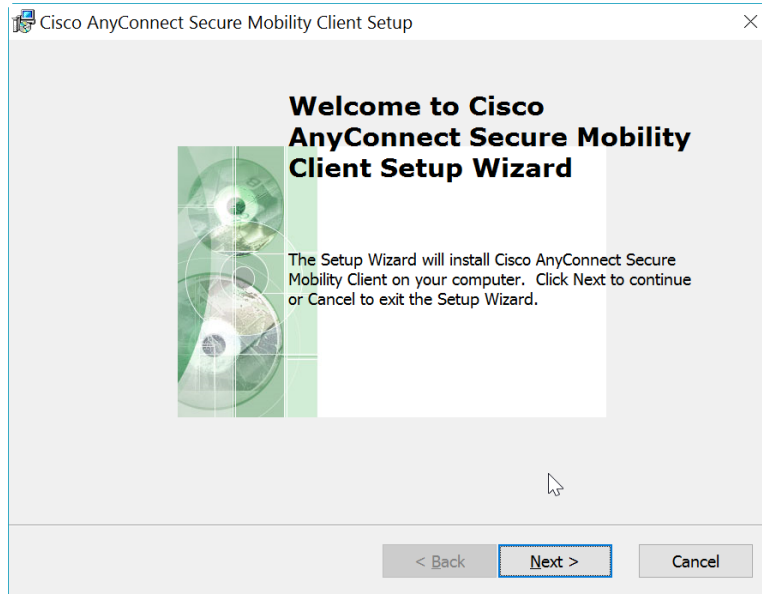
Putty and other SSH programs can give you access to your Mosaic files on any computer with Internet access. This will guide you on how to do so via the application Putty.

Tested on: Windows 10

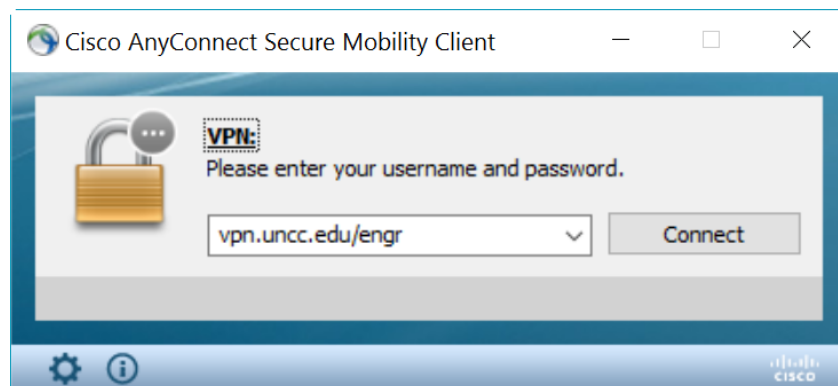
Applies to: Windows 7, 8.1, 10

## Setup

Visit this [link](#)<sup>1</sup> to access the UNCC VPN website. Log in with your NinerNet credentials, choose your operating system, and it will download the installer. Run the installer and you will have Cisco AnyConnect installed.

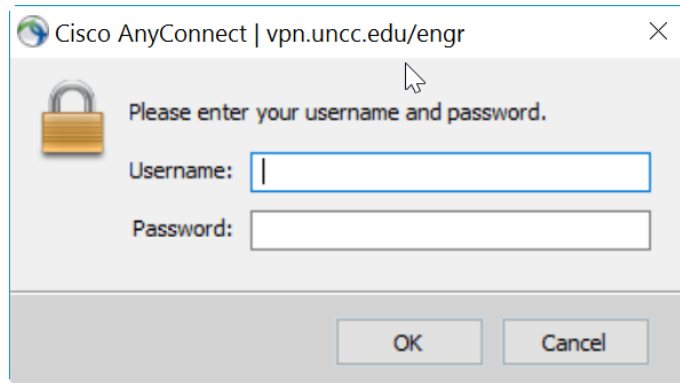


Open the Cisco AnyConnect program and type the VPN address "vpn.uncc.edu/engr" into the address bar and click "Connect".

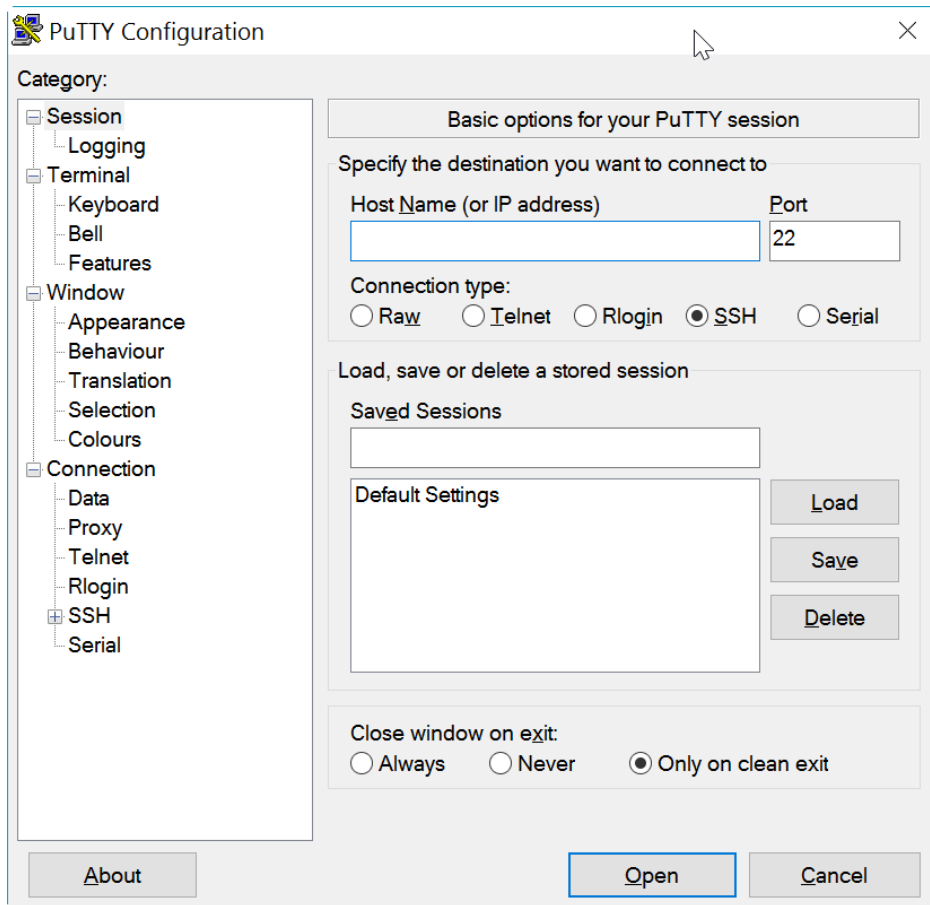


<sup>1</sup><https://vpn.uncc.edu/+CSCOE+/logon.html>

Enter your NinerNet credentials and click "OK". You should now be successfully connected to the VPN.

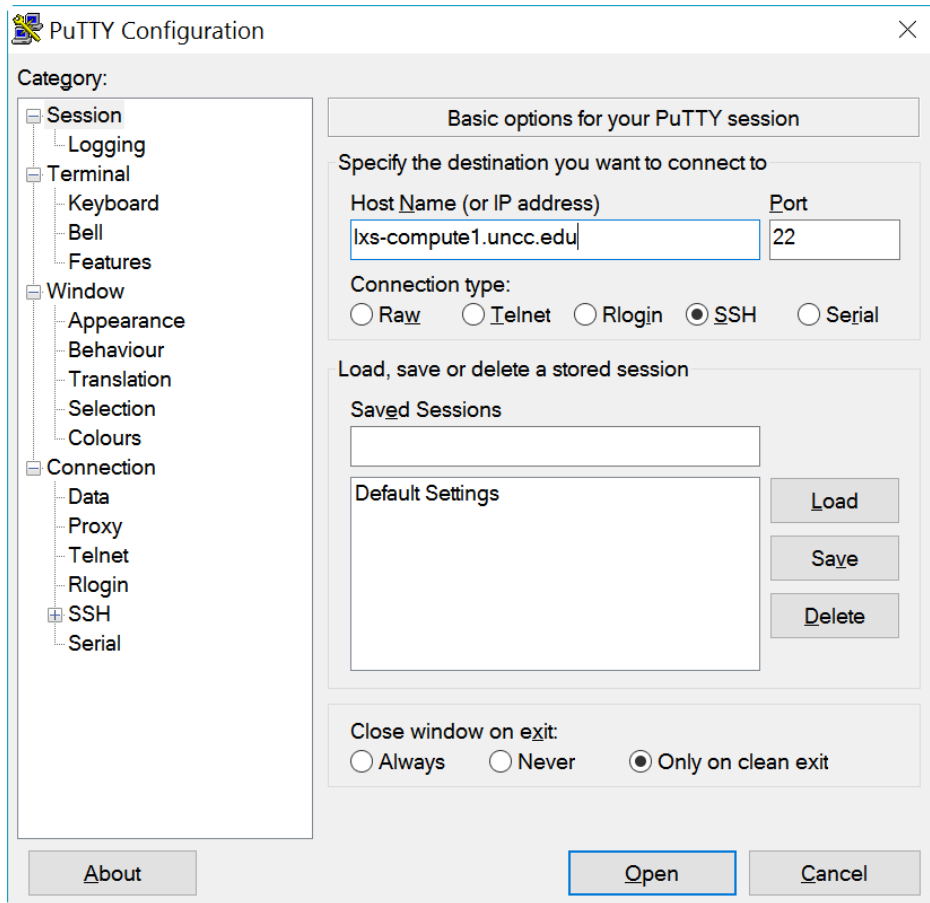


Download Putty from [here](http://www.putty.org/)<sup>2</sup> and run it.

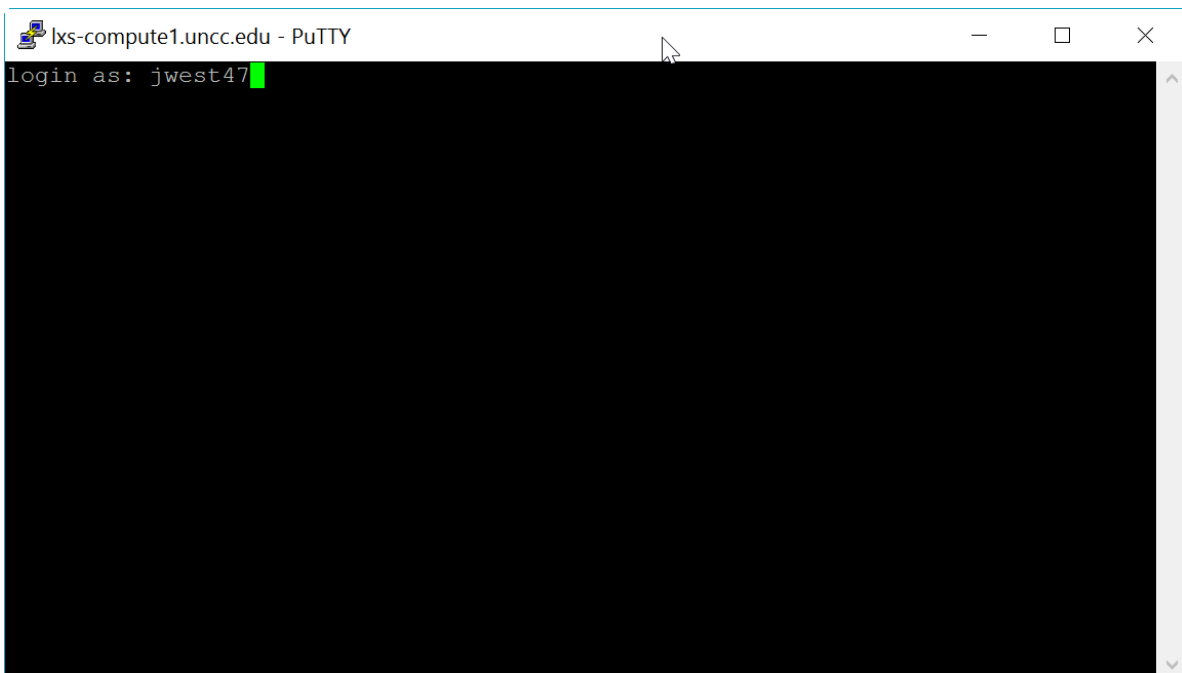


<sup>2</sup> <http://www.putty.org/>

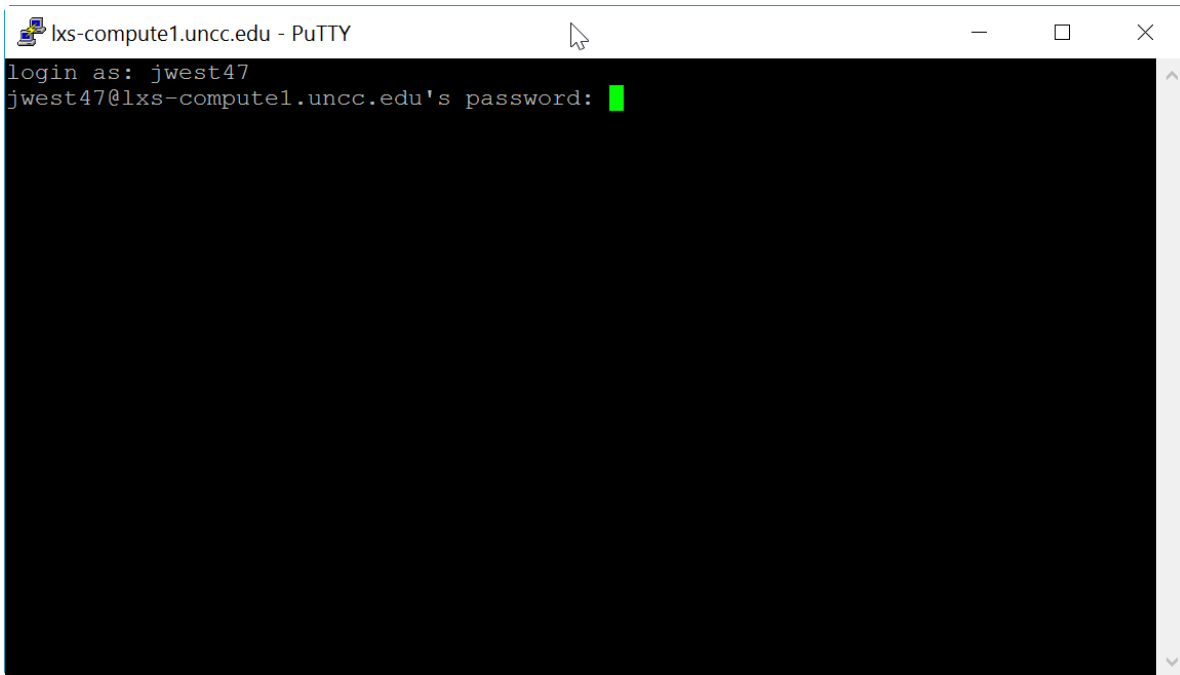
In the “Host Name” field enter “lxs-compute1.uncc.edu” and click “Open”.



Enter your Mosaic username and press the “Enter” key.

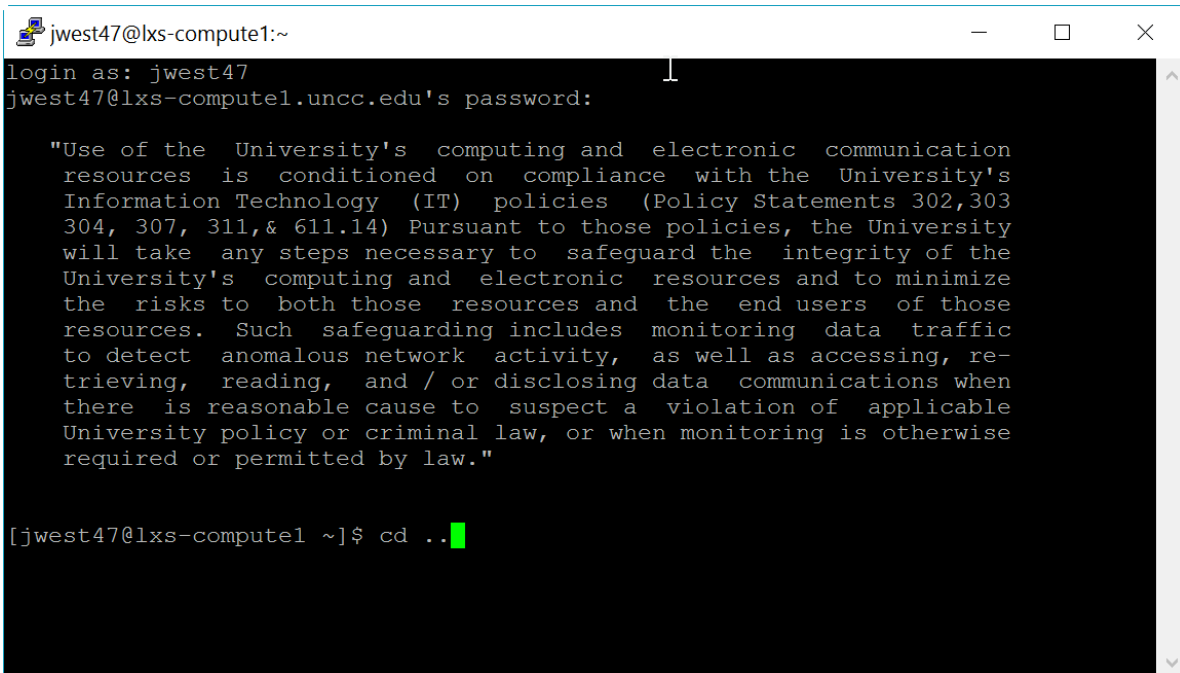


Enter your Mosaic Linux password and press the "Enter" key.



```
lxs-compute1.uncc.edu - PuTTY
login as: jwest47
jwest47@lxs-compute1.uncc.edu's password: █
```

Type "cd .." to enter the root of your Mosaic account.



```
jwest47@lxs-compute1:~
login as: jwest47
jwest47@lxs-compute1.uncc.edu's password:

"Use of the University's computing and electronic communication
resources is conditioned on compliance with the University's
Information Technology (IT) policies (Policy Statements 302,303
304, 307, 311,& 611.14) Pursuant to those policies, the University
will take any steps necessary to safeguard the integrity of the
University's computing and electronic resources and to minimize
the risks to both those resources and the end users of those
resources. Such safeguarding includes monitoring data traffic
to detect anomalous network activity, as well as accessing, re-
trieving, reading, and / or disclosing data communications when
there is reasonable cause to suspect a violation of applicable
University policy or criminal law, or when monitoring is otherwise
required or permitted by law."

[jwest47@lxs-compute1 ~]$ cd ..█
```