

# Using Mosaic Anywhere on a Windows Computer

---

Tested on: Windows 10

Applies to: Windows 7, 8.1, 10

This document will assist you in using Mosaic Anywhere on a Windows based computer. Mosaic Anywhere is a method of remotely using a Mosaic Machine from your personal computer connected to the Internet.

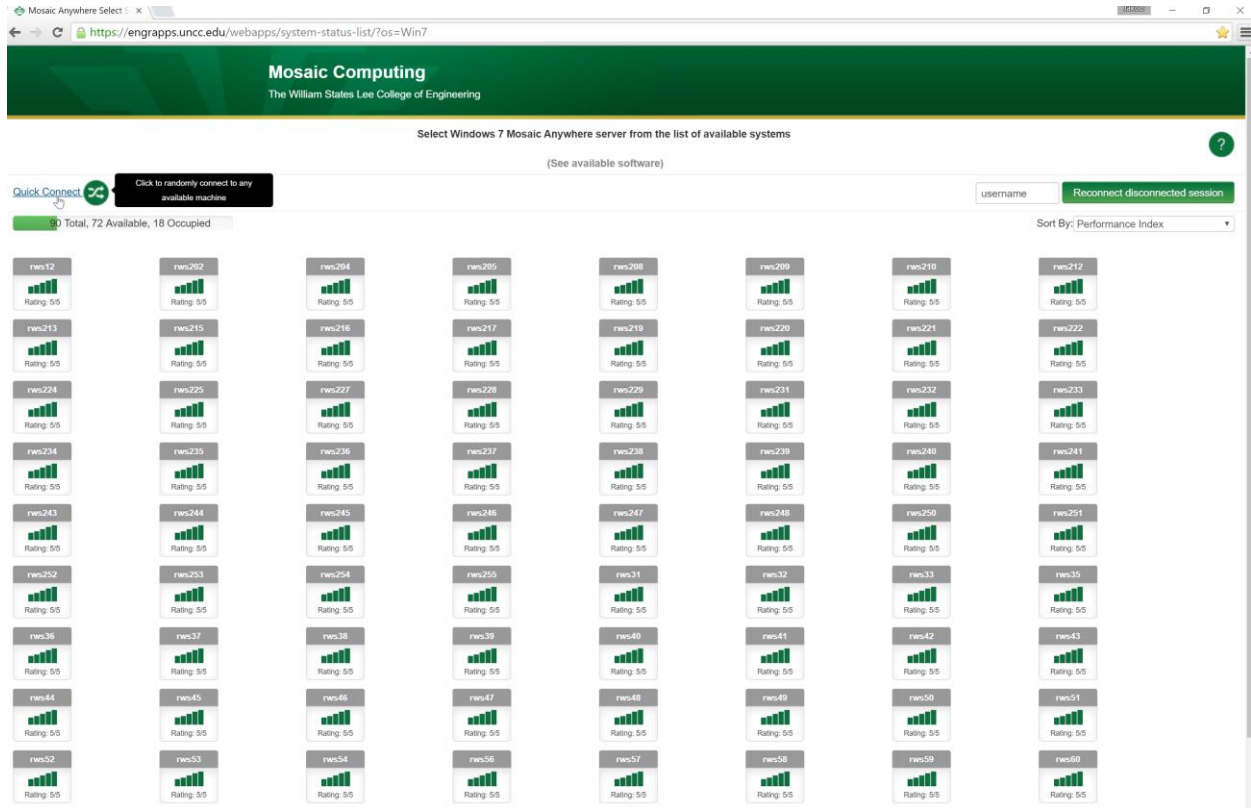
Note: If you need to use multiple monitors or share local drives visit the “Manually Connecting via MSTSC” section.

## Table of Contents

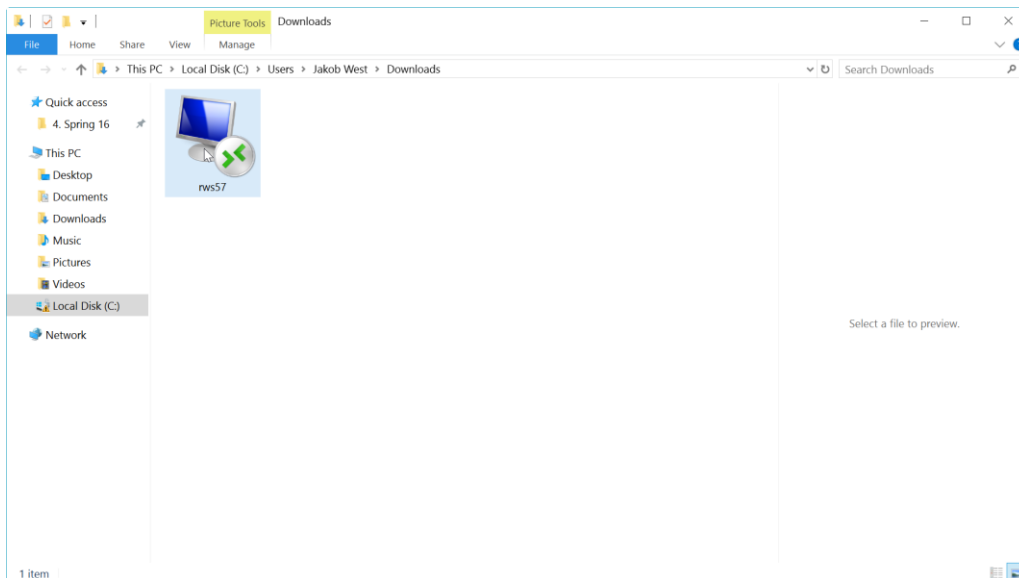
Quick Connect.....	3
Customized Connection .....	5
Manually Connecting via MSTSC.....	7

# Quick Connect

First, visit the system status page on the Mosaic website [here](https://engrapps.uncc.edu/webapps/system-status-list/?os=Win7)<sup>1</sup>.

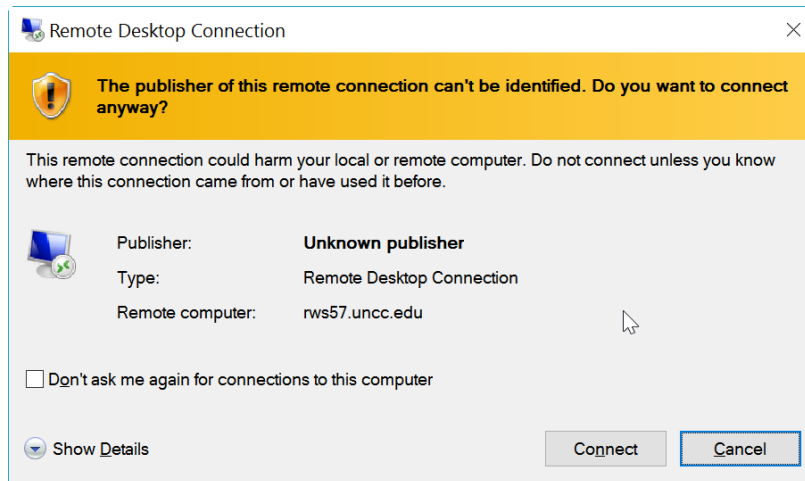


The easiest way to connect is by clicking the “Quick Connect” link in the top left. This will download an RDP file. Navigate to your download directory and double click the RDP file.

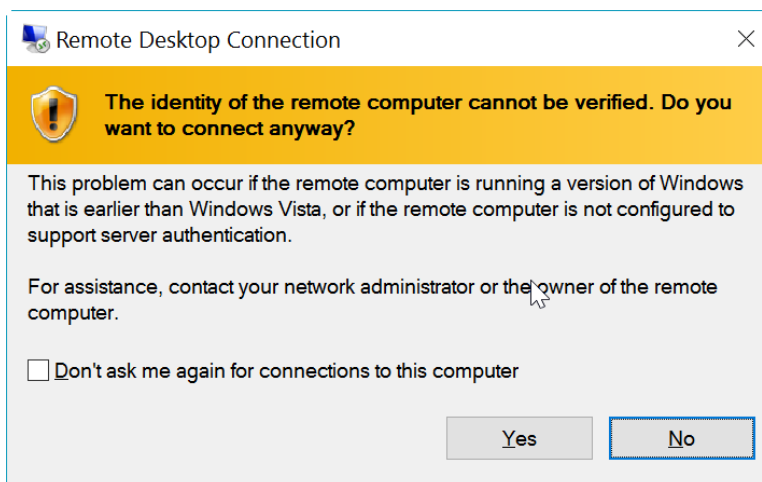


<sup>1</sup> <https://engrapps.uncc.edu/webapps/system-status-list/?os=Win7>

If you have never connected to that specific machine before this warning will pop up. Check the box “Don’t ask me again...” and click “Connect”.



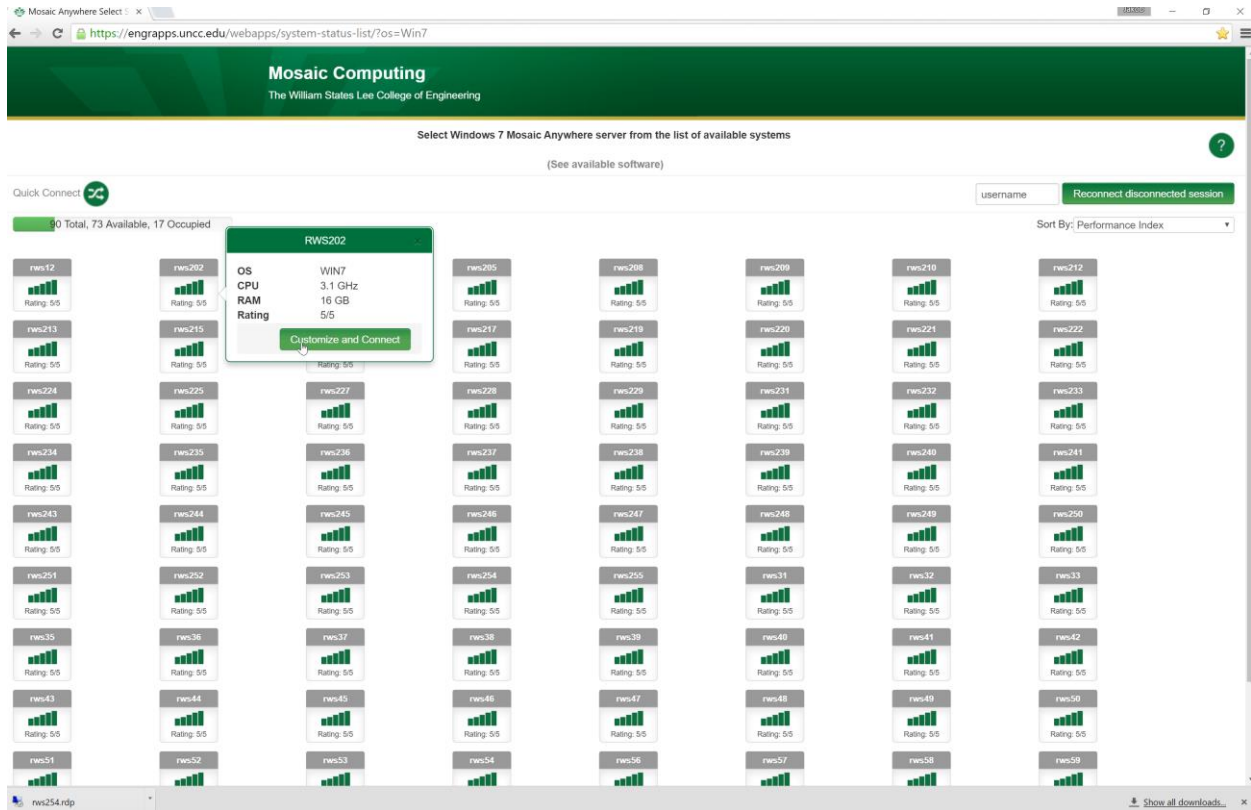
Another warning may pop up, click the box “Don’t ask me again...” and click “Yes”.



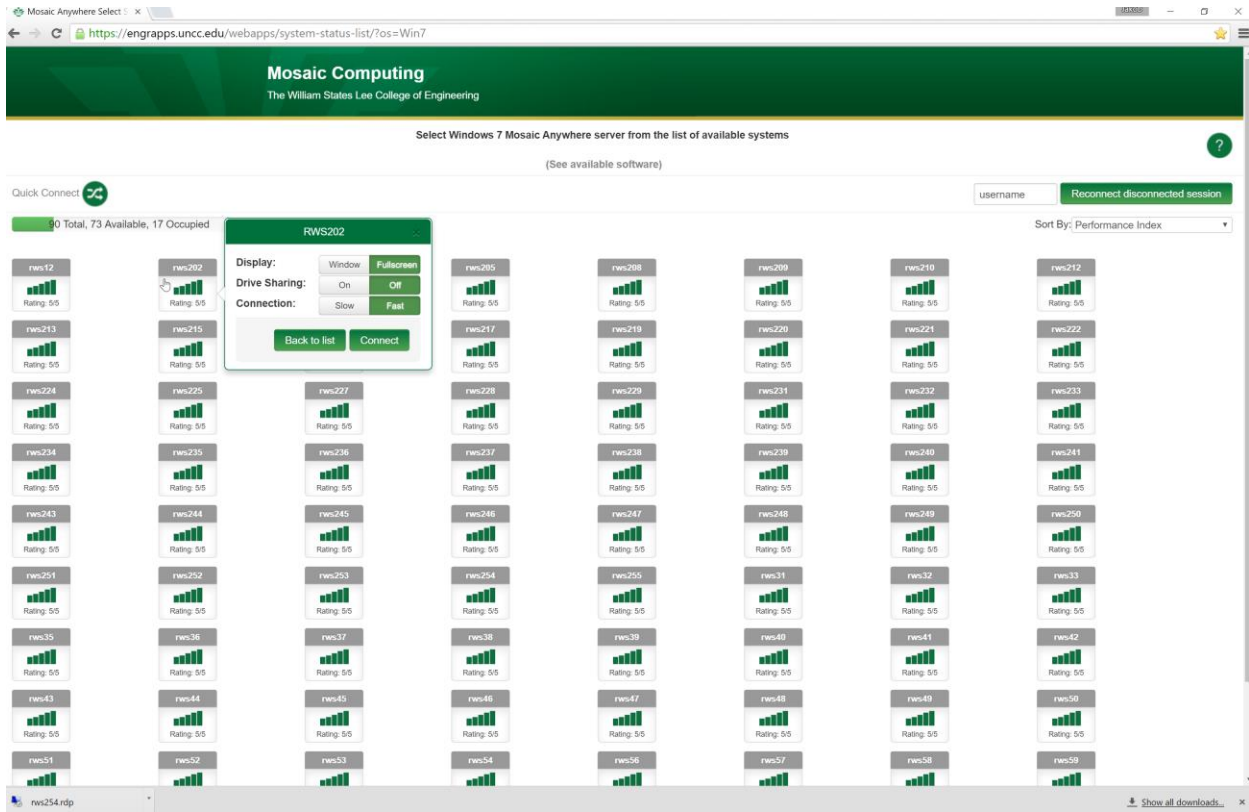
You should now be connected and see a log in screen for Mosaic.

# Customized Connection

You may also click on any of the available systems in the system status list and customize your connection.



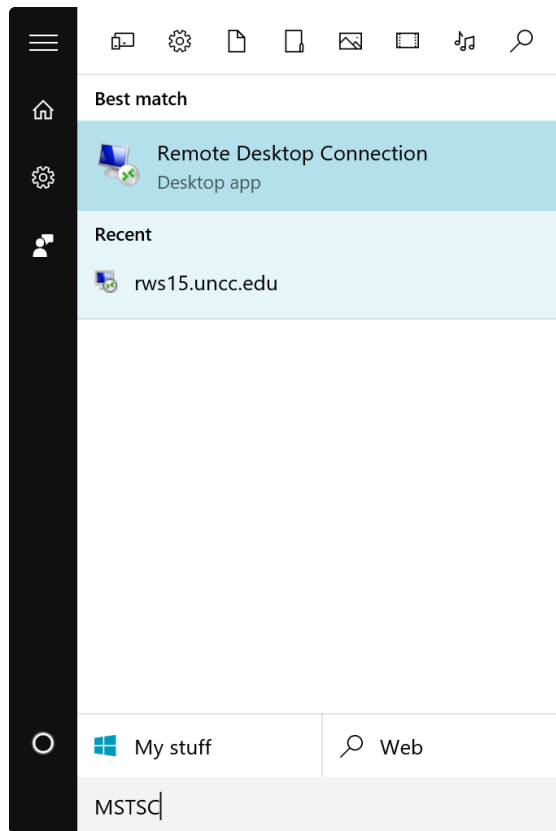
This allows you to select basic options about your connection.



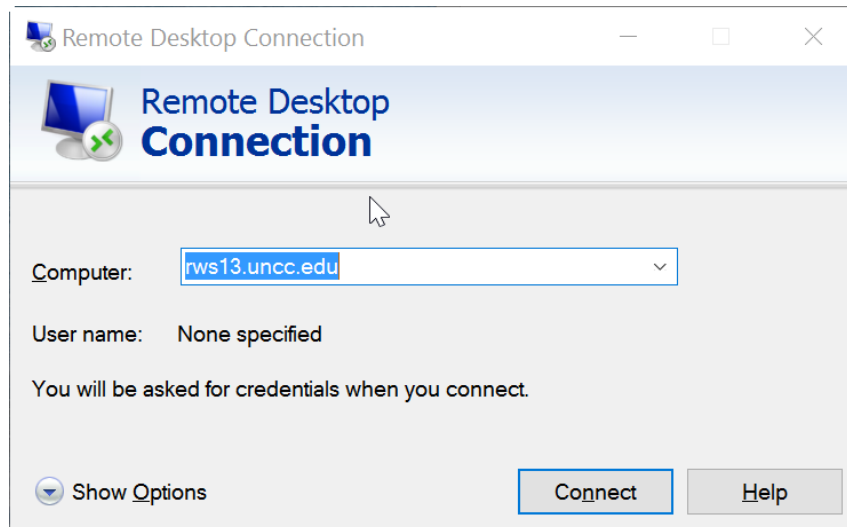
This will edit the settings in the RDP file. You can edit any of the settings available in the window and click "Connect". It will download the customized RDP file and you can follow the instructions in the "Quick Connect" section.

## Manually Connecting via MSTSC

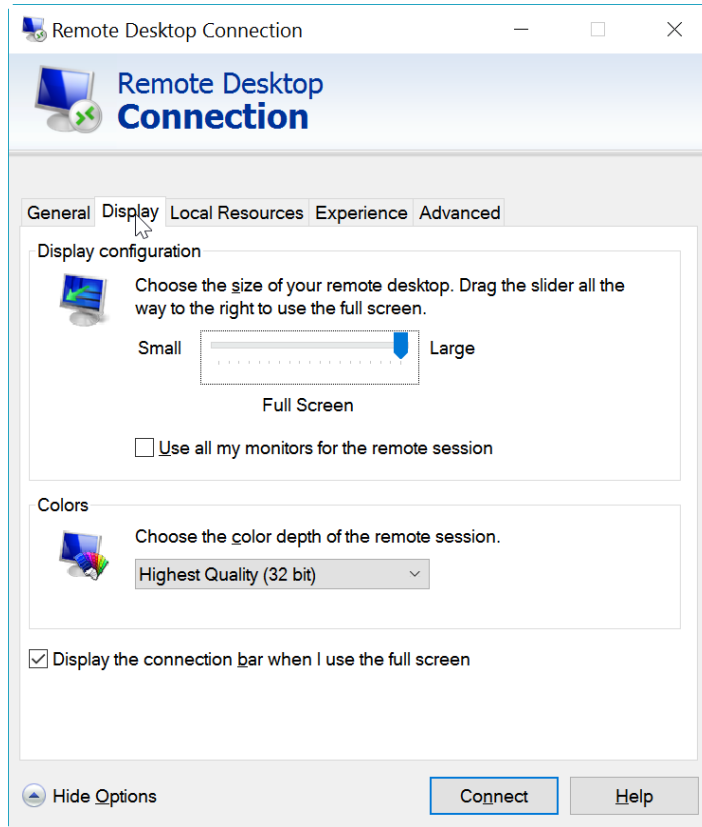
It is possible to connect without actually downloading an RDP file. View the system status list and remember one of the RWS numbers. Open RDC by opening the start menu and typing "MSTSC".



Once RDC is open you can type the address for the RWS into the address bar.



The “Show Options” drop down allows you to change certain settings. If you need multiple monitor support or want to change the resolution visit the “Display Tab”. Other settings can be found here to customize your experience.



Another useful, but potentially dangerous, setting is the ability to share local drives. This is found within the “Local Resources” tab under “More...”.

