

# VPN Access to Mosaic Machine on Windows

---

Tested on: Windows 10

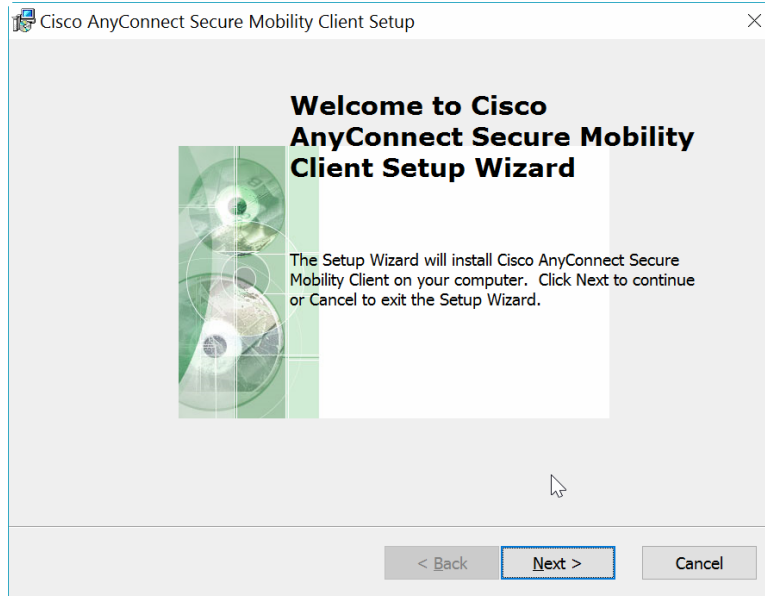
Applies to: Windows 7, 8.1, 10

With COE Connect gone, the current way to connect to your office computer remotely is via the UNCC VPN and RDC. This document will walk you through the steps to get you connected to your office Mosaic machine from another computer.

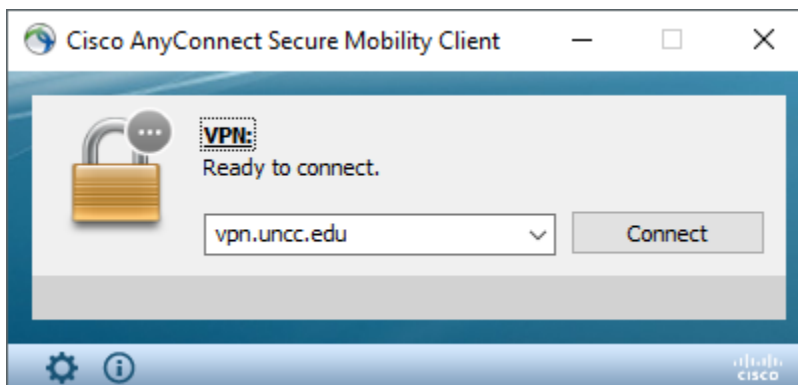
NOTE: If you would like dual monitor setup please look at the last page of this document.

## Setup

Visit this [link](#)<sup>1</sup> to access the UNCC VPN website. Log in with your NinerNet credentials, choose your operating system, and it will download the installer. Run the installer and you will have Cisco AnyConnect installed.

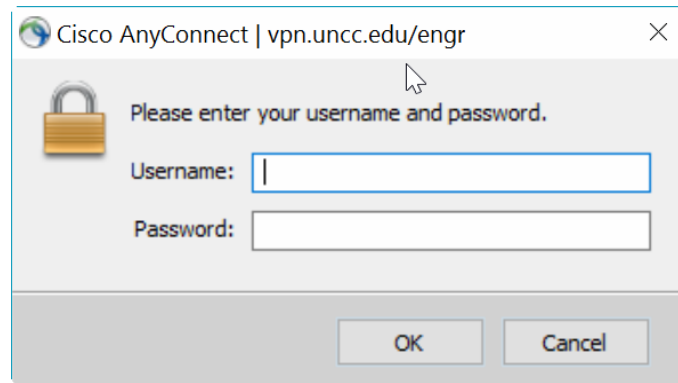


Open the Cisco AnyConnect program and type the VPN address “vpn.uncc.edu” into the address bar and click “Connect”.

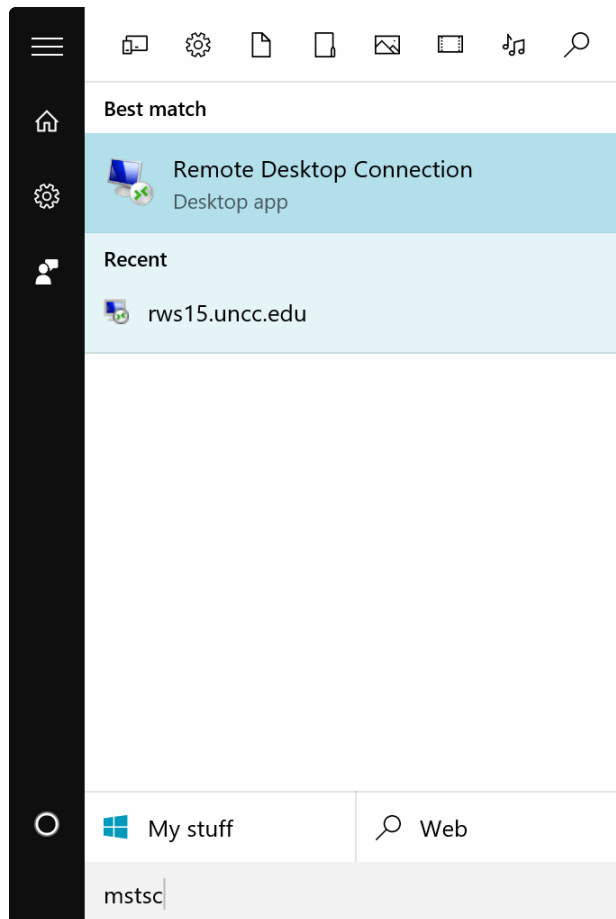


<sup>1</sup><https://vpn.uncc.edu/+CSCOE+/logon.html>

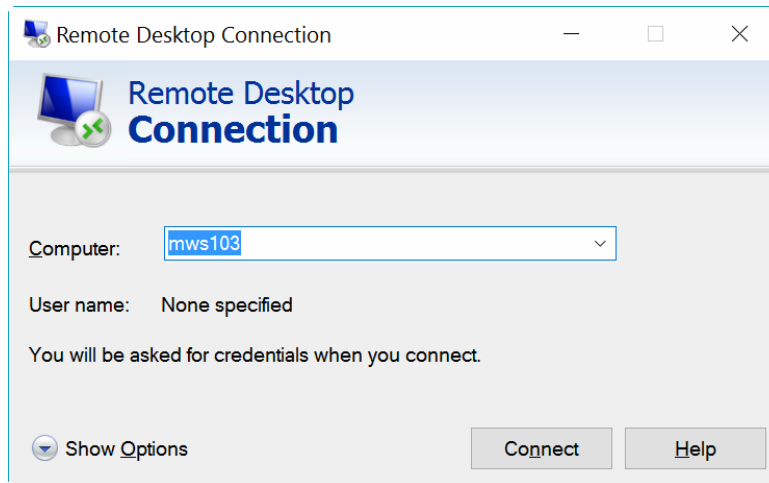
Enter your NinerNet credentials and click "OK". You should now be successfully connected to the VPN.



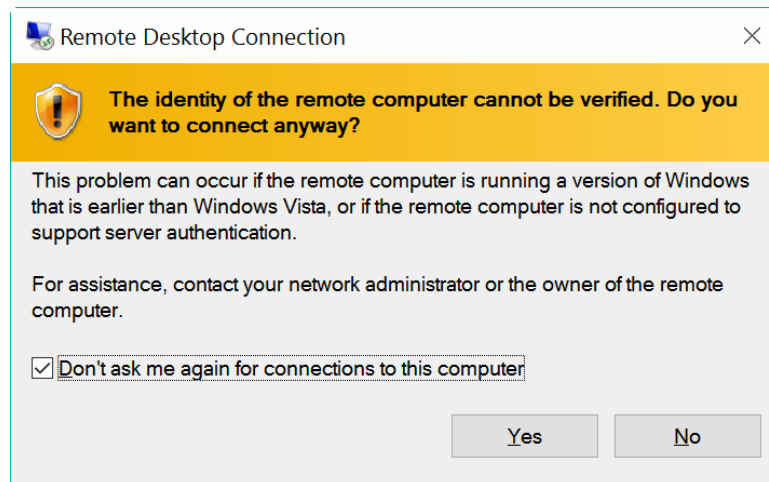
Now, open the start menu and type "mstsc" and you should see "Remote Desktop Connection". Open this program.



Once Remote Desktop Connection is open type in your MWS number and click “Connect”.

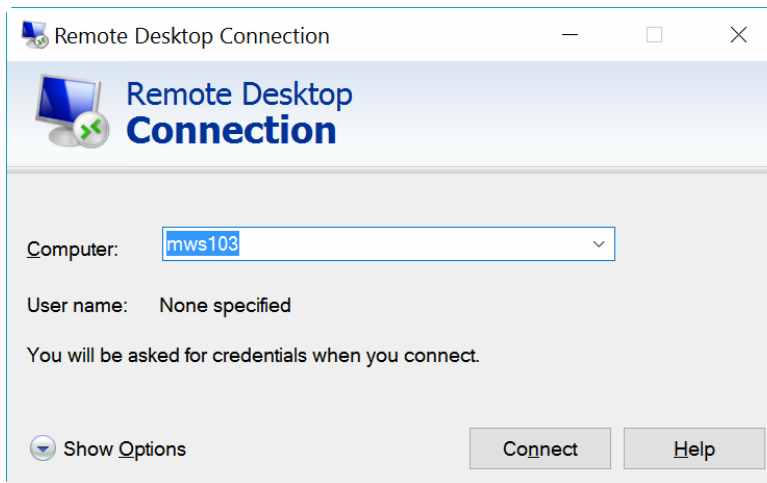


Check the box and click “Yes”.



You should now be connected to your office computer.

In order to setup dual monitor display for RDC at this step click “Show Options” in the lower left.



In the “Display” tab, check the box that says “Use all my monitors...”

